

What is a PMO?

In construction and engineering fields, a Project Management Office (PMO) is the connection between project managers (PM), on-site workers, and those involved remotely. A PMO is not a replacement of a PM, but instead an **extension of their capabilities**. The primary responsibilities still fall on the PM, but the PMO assists with resolving multiple pain points and increases efficiency, accuracy, and overall delight for those involved with a project.

Common pain points that can be resolved with a PMO



Silos of teams and communications



Difficulty connecting on-site and remote positions



Inability to conduct an overall analysis of schedule status, budgets, and more

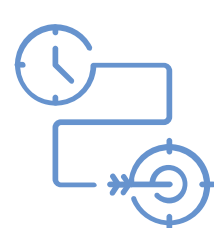


Lack of transparency due to challenges of reporting in the field



Inability to facilitate task completion

Different types of PMO services



Reporting support



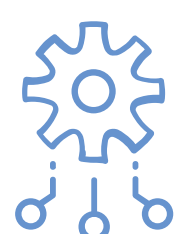
Project documentation



Centralized communication



Project manager support



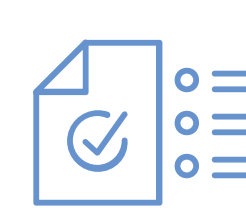
Ease of resource management



Increased team capacity



Creating replicable processes for clients



Develop program-wide standards and specifications

Are you ready to get started?

Vertex's PMO Services ensure agility, scalability, and efficiency. If you're ready to deliver top-quality services, talk to the Vertex team today.

[TALK TO OUR TEAM](#)